

Pattern Reference



Actual Size



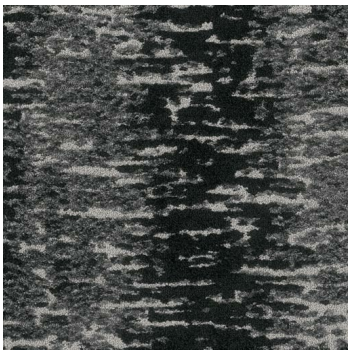
Atmospheric (7713)

Product Quick Specs

Style Name/Number	Atmospheric 7713
Color Name/Number	Glazed 2312
Construction	Multi-Level Tip Sheared Loop
Selected Backing	Nexus® Modular
Dye Method	Solution/Yarn Dyed
Fiber Type	Encore® BCF (with recycled content)
Face Weight	35 oz./sy (1187 grams/m2)
Pile Density	6691 oz./y3 (248.11 kg/m3)
Pattern Repeat	N/A
Gauge	1/10 (3.94 rows/cm)
Stitches	9 stitches/in (3.54 stitches/cm)
Standard Size	24" x 24" approx. 60.96cm x 60.96cm
Standard Adhesive	Commercialon Premium Modular Adhesive
Optional Adhesive	TileTabs
Smoke Density	Less then 450 flaming
Static Test	Less then 3 kv
Standard Warranties	Encore BCF (with ColorLoc Plus) Nexus Modular Commercialon Adhesive for Modular Carpet & LVT
Optional Warranties	Tile Tabs



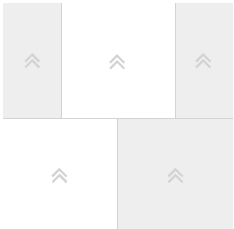
Products Installed



Atmospheric 7713 Modular
2312 Glazed

carpet

Installation Method



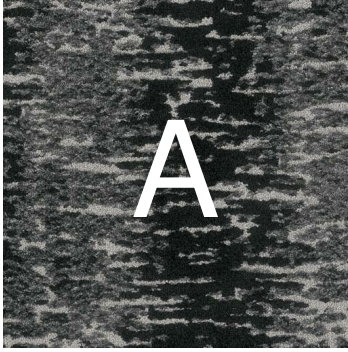
Brick (24x24)

This three dimensional rendering is for visualization purposes only and may not be an exact representations of the selected products. Pile heights may vary from product to product and adhesive requirements may vary depending on product selection. The review of actual product samples are recommended before final selection. Please contact your J+J Flooring Group sales representative with any questions. This unique carpet design is protected under the U.S. Copyright Act of 1976. Any unauthorized copying or duplication of this design constitutes copyright infringement in violation of federal law.



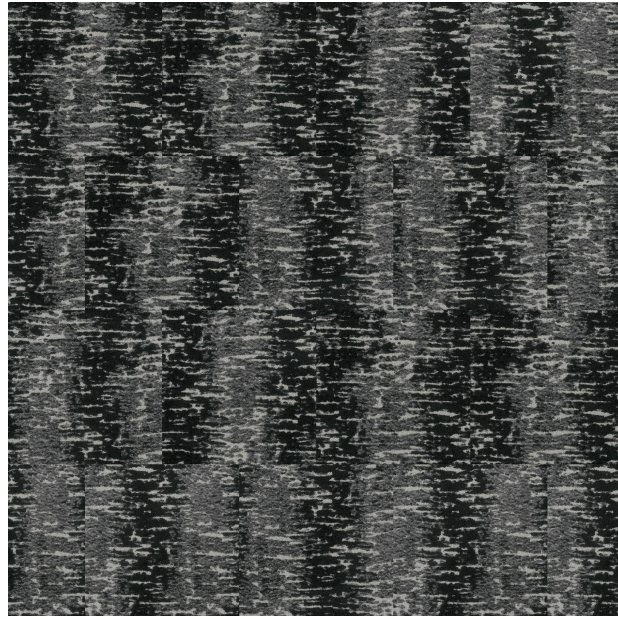
FLOORING

Keys



Atmospheric 7713 Modular
2312 Glazed

carpet



Pattern Diagram

