



**Product Specifications**

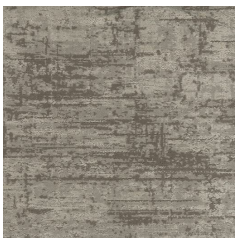
<b>Construction</b>	Patterned Cut and Loop
<b>Backing</b>	PremierBac® Plus (standard backing)
<b>Dye Method</b>	Beck Dyed
<b>Nylon Fiber Type</b>	Type 6,6 Nylon
<b>Face Weight</b>	40 oz./sy (1356 grams/m2)
<b>Pile Density</b>	7074 oz./y3 (262.31 kg/m3)
<b>Pattern Repeat</b>	72.00" (w) x 77.00" (l) approx. (182.88cm x 195.58cm)
<b>Gauge</b>	1/10 (3.94 rows/cm)
<b>Stitches Per Inch</b>	10 stitches/in (3.94 stitches/cm)
<b>Standard Width</b>	12 ft 3.66 m
<b>Standard Adhesive</b>	Commercialon Premium Carpet Adhesive
<b>Standard Warranties</b>	<a href="#">PremierBac Plus</a> <a href="#">Commercialon Premium Broadloom Adhesive</a>
<b>Optional Warranties</b>	<a href="#">Endure Plus</a> <a href="#">TitanBac Plus</a>

**Special Technologies**

**Environmental Specifications & Tests**

<b>NSF 140:</b>	Gold Certified
<b>Indoor Air Quality</b>	GLP3678
<b>Total Recycled Content</b>	19.77%
<b>Flooring Radiant Panel</b>	Class 1
<b>Smoke Density</b>	Less than 450 flaming (ASTM E 662)
<b>Static Test</b>	Less than 3 kv (AATCC-134)
<b>ADA Compliance</b>	Compliant For Accessible Routes
<b>Pill Test</b>	Yes
<b>Lightfastness</b>	Yes

**Colorways**



2255 Warm Toned



2258 Diffuse



2261 Hase Grey



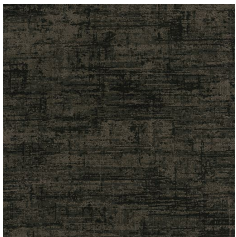
2262 Neutral Density



2265 Grayscale



3106 Noise



3108 Shutter



3109 Sync



3110 Burst