



**Product Specifications**

|                            |                                                                                                                                      |
|----------------------------|--------------------------------------------------------------------------------------------------------------------------------------|
| <b>Construction</b>        | Textured Loop                                                                                                                        |
| <b>Backing</b>             | PremierBac® Plus (standard backing)                                                                                                  |
| <b>Dye Method</b>          | Solution Dyed                                                                                                                        |
| <b>Nylon Fiber Type</b>    | Encore® SD Ultima® (with recycled content)                                                                                           |
| <b>Face Weight</b>         | 25 oz./sy (848 grams/m2)                                                                                                             |
| <b>Pile Density</b>        | 7795 oz./y3 (289.04 kg/m3)                                                                                                           |
| <b>Pattern Repeat</b>      | .50" (w) x .00" (l) approx. (1.27cm x .00cm)                                                                                         |
| <b>Gauge</b>               | 1/10 (3.94 rows/cm)                                                                                                                  |
| <b>Stitches Per Inch</b>   | 9 stitches/in (3.54 stitches/cm)                                                                                                     |
| <b>Standard Width</b>      | 12 ft 3.66 m                                                                                                                         |
| <b>Standard Adhesive</b>   | Commercialon Premium Carpet Adhesive                                                                                                 |
| <b>Standard Warranties</b> | <a href="#">Encore SD Ultima Fiber</a><br><a href="#">PremierBac Plus</a><br><a href="#">Commercialon Premium Broadloom Adhesive</a> |
| <b>Optional Warranties</b> | <a href="#">Endure Plus</a><br><a href="#">TitanBac Plus</a>                                                                         |

**Special Technologies**

|                               |          |
|-------------------------------|----------|
| <b>ProSept® Antimicrobial</b> | Optional |
| <b>ProTex® Soil Release</b>   | Standard |
| <b>Sentir® Odor-Blocker</b>   | Optional |

**Environmental Specifications & Tests**

|                               |                                    |
|-------------------------------|------------------------------------|
| <b>NSF 140:</b>               | Gold Certified                     |
| <b>Indoor Air Quality</b>     | GLP5055                            |
| <b>Total Recycled Content</b> | 33.53%                             |
| <b>Flooring Radiant Panel</b> | Class 1                            |
| <b>Smoke Density</b>          | Less then 450 flaming (ASTM E 662) |
| <b>Static Test</b>            | Less then 3 kv (AATCC-134)         |
| <b>ADA Compliance</b>         | Compliant For Accessible Routes    |
| <b>Pill Test</b>              | Yes                                |
| <b>Lightfastness</b>          | Yes                                |

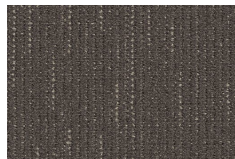
**Colorways**



2703 Texture



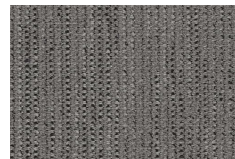
2704 Variegated



2706 Strand



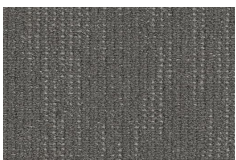
2707 Fiber



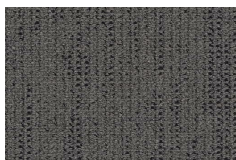
2708 Warp



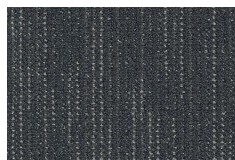
2709 Character



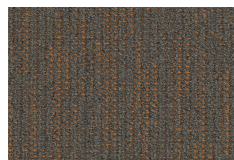
2710 Tweed



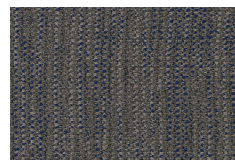
2711 Knit



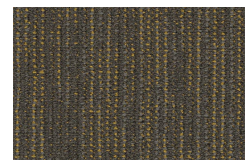
2712 Knot



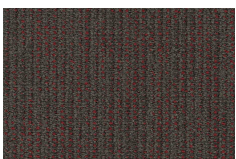
2713 Loop



2714 Nubby



2715 Weave



2716 Structure