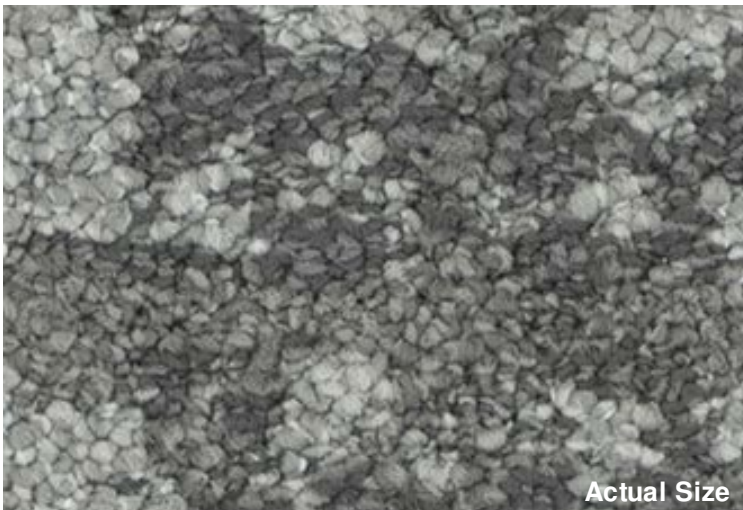




Pattern Reference



Actual Size



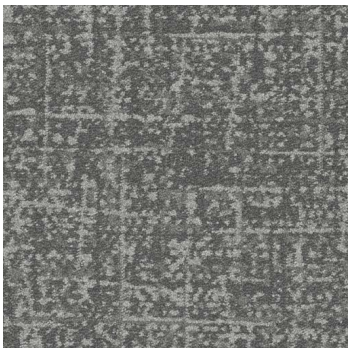
Metamorphic (7717)

Product Quick Specs

Style Name/Number	Metamorphic 7717
Color Name/Number	Limestone 2959
Construction	Textured Patterned Loop
Selected Backing	Nexus® Modular
Dye Method	Solution Dyed
Fiber Type	Encore® SD Ultima® (with recycled content)
Face Weight	35 oz./sy (1187 grams/m2)
Pile Density	15063 oz./y3 (558.55 kg/m3)
Pattern Repeat	N/A
Gauge	1/10 (3.94 rows/cm)
Stitches	10 stitches/in (3.94 stitches/cm)
Standard Size	24" x 24" approx. 60.96cm x 60.96cm
Standard Adhesive	Commercialon Premium Modular Adhesive
Optional Adhesive	TileTabs
Smoke Density	Less then 450 flaming
Static Test	Less then 3 kv
Standard Warranties	Encore SD Ultima Fiber Nexus Modular Commercialon Adhesive for Modular Carpet & LVT
Optional Warranties	Tile Tabs



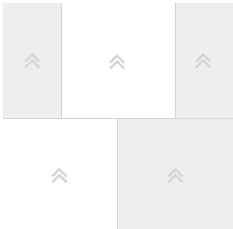
Products Installed



Metamorphic 7717 Modular
2959 Limestone

carpet

Installation Method



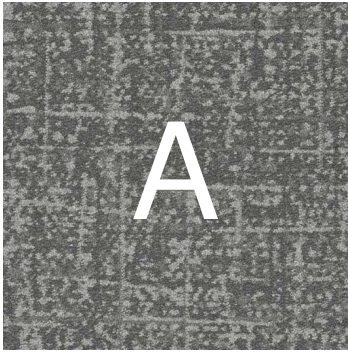
Brick (24x24)

This three dimensional rendering is for visualization purposes only and may not be an exact representations of the selected products. Pile heights may vary from product to product and adhesive requirements may vary depending on product selection. The review of actual product samples are recommended before final selection. Please contact your J+J Flooring Group sales representative with any questions. This unique carpet design is protected under the U.S. Copyright Act of 1976. Any unauthorized copying or duplication of this design constitutes copyright infringement in violation of federal law.



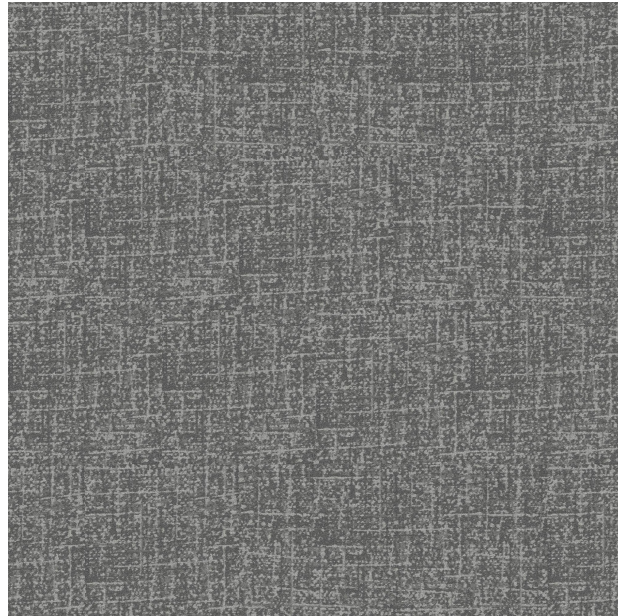
FLOORING

Keys



Metamorphic 7717 Modular
2959 Limestone

carpet



Pattern Diagram

