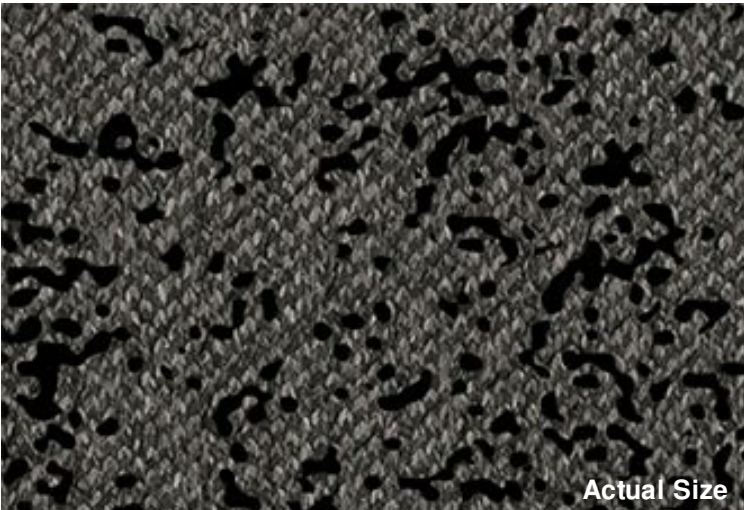




Pattern Reference



Actual Size



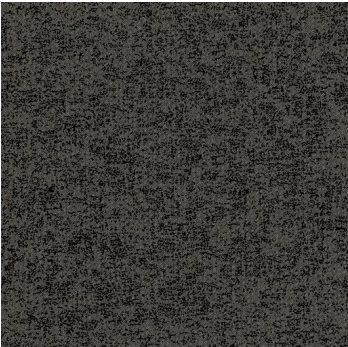
Stipple (1838)

Product Quick Specs

| | |
|---------------------|---|
| Style Name/Number | Stipple 1838 |
| Color Name/Number | Dappled 2684 |
| Construction | Textile Composite |
| Selected Backing | Polyester Felt Cushion |
| Dye Method | Solution Dyed |
| Fiber Type | Polyester - Applied Pattern |
| Face Weight | 12 oz./sy (407 grams/m2) |
| Pattern Repeat | N/A |
| Dimensions | 24" x 24" modules |
| Standard Adhesive | Kinetex Adhesive |
| Optional Adhesive | Kinetex PreFix |
| Smoke Density | Less then 450 flaming |
| Static Test | Less then 3 kv |
| Standard Warranties | Kinetex Kinetex Adhesive |
| Optional Warranties | PreFix |



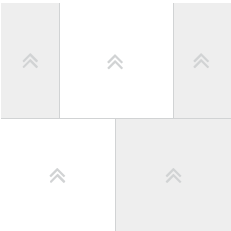
Products Installed



Stipple 1838 Modular
2684 Dappled



Installation Method

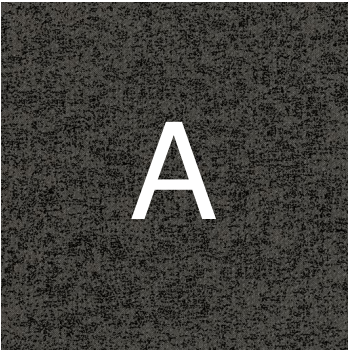


Brick (24x24)

This three dimensional rendering is for visualization purposes only and may not be an exact representations of the selected products. Pile heights may vary from product to product and adhesive requirements may vary depending on product selection. The review of actual product samples are recommended before final selection. Please contact your J+J Flooring Group sales representative with any questions. This unique carpet design is protected under the U.S. Copyright Act of 1976. Any unauthorized copying or duplication of this design constitutes copyright infringement in violation of federal law.



Keys



Stipple 1838 Modular
2684 Dappled



Pattern Diagram

