

## Madras Modular (7065)

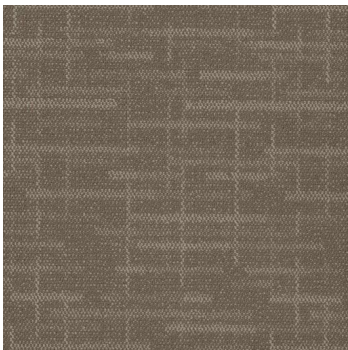
### Product Quick Specs

<b>Style Name/Number</b>	Madras Modular 7065
<b>Color Name/Number</b>	Muslin 2391
<b>Construction</b>	Patterned Loop
<b>Selected Backing</b>	Nexus® Modular
<b>Dye Method</b>	Solution Dyed
<b>Fiber Type</b>	Encore® SD Ultima® (with recycled content)
<b>Face Weight</b>	15 oz./sy (509 grams/m2)
<b>Pile Density</b>	6726 oz./y3 (249.40 kg/m3)
<b>Pattern Repeat</b>	N/A
<b>Gauge</b>	1/12 (4.72 rows/cm)
<b>Stitches</b>	10 stitches/in (3.94 stitches/cm)
<b>Standard Size</b>	24" x 24" approx. 60.96cm x 60.96cm
<b>Standard Adhesive</b>	Commercialon Premium Modular Adhesive
<b>Optional Adhesive</b>	TileTabs
<b>Smoke Density</b>	Less then 450 flaming
<b>Static Test</b>	Less then 3 kv
<b>Standard Warranties</b>	<a href="#">Encore SD Ultima Fiber</a> <a href="#">Nexus Modular</a> <a href="#">Commercialon Adhesive for Modular Carpet &amp; LVT</a>
<b>Optional Warranties</b>	<a href="#">Tile Tabs</a>





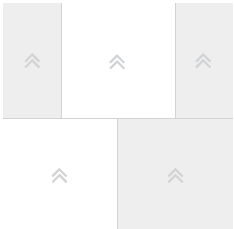
**Products Installed**



Madras Modular 7065 Modular 2391 Muslin

carpet

**Installation Method**



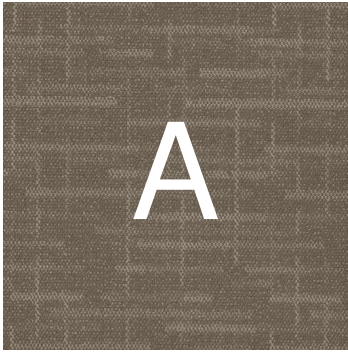
Brick (24x24)

This three dimensional rendering is for visualization purposes only and may not be an exact representations of the selected products. Pile heights may vary from product to product and adhesive requirements may vary depending on product selection. The review of actual product samples are recommended before final selection. Please contact your J+J Flooring Group sales representative with any questions. This unique carpet design is protected under the U.S. Copyright Act of 1976. Any unauthorized copying or duplication of this design constitutes copyright infringement in violation of federal law.



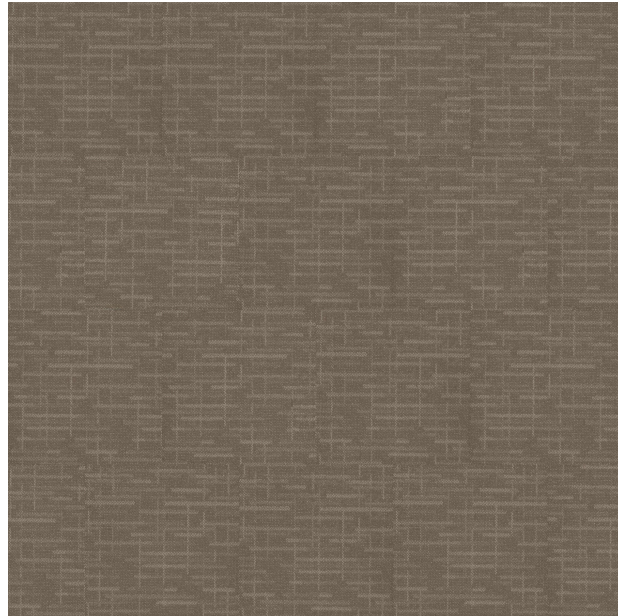
# FLOORING

## Keys



Madras Modular 7065 Modular  
2391 Muslin

carpet



## Pattern Diagram

