



Pattern Reference



Actual Size



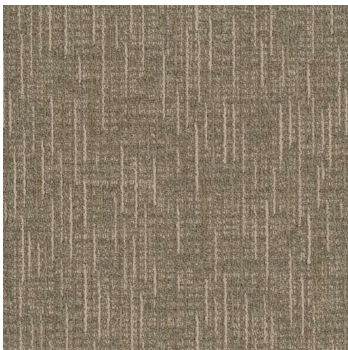
Cameo II Modular (7949)

Product Quick Specs

Style Name/Number	Cameo II Modular 7949
Color Name/Number	Norman 1995
Construction	Textured Patterned Loop
Selected Backing	Nexus® Modular
Dye Method	Solution/Yarn Dyed
Fiber Type	Encore® BCF (with recycled content)
Face Weight	28 oz./sy (949 grams/m2)
Pile Density	7127 oz./y3 (264.27 kg/m3)
Pattern Repeat	N/A
Gauge	1/12 (4.72 rows/cm)
Stitches	12.5 stitches/in (4.92 stitches/cm)
Standard Size	24" x 24" approx. 60.96cm x 60.96cm
Standard Adhesive	Commercialon Premium Modular Adhesive
Optional Adhesive	TileTabs
Smoke Density	Less than 450 flaming
Static Test	Less than 3 kv
Standard Warranties	Encore BCF (with ColorLoc Plus) Nexus Modular Commercialon Adhesive for Modular Carpet & LVT
Optional Warranties	Tile Tabs



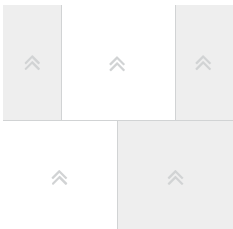
Products Installed



Cameo II Modular 7949 Modular
1995 Norman

carpet

Installation Method



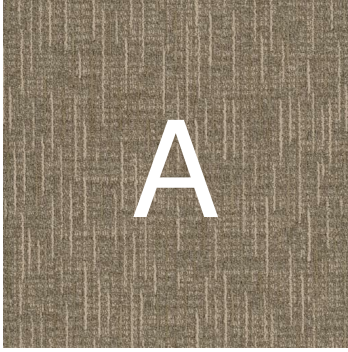
Brick (24x24)

This three dimensional rendering is for visualization purposes only and may not be an exact representations of the selected products. Pile heights may vary from product to product and adhesive requirements may vary depending on product selection. The review of actual product samples are recommended before final selection. Please contact your J+J Flooring Group sales representative with any questions. This unique carpet design is protected under the U.S. Copyright Act of 1976. Any unauthorized copying or duplication of this design constitutes copyright infringement in violation of federal law.



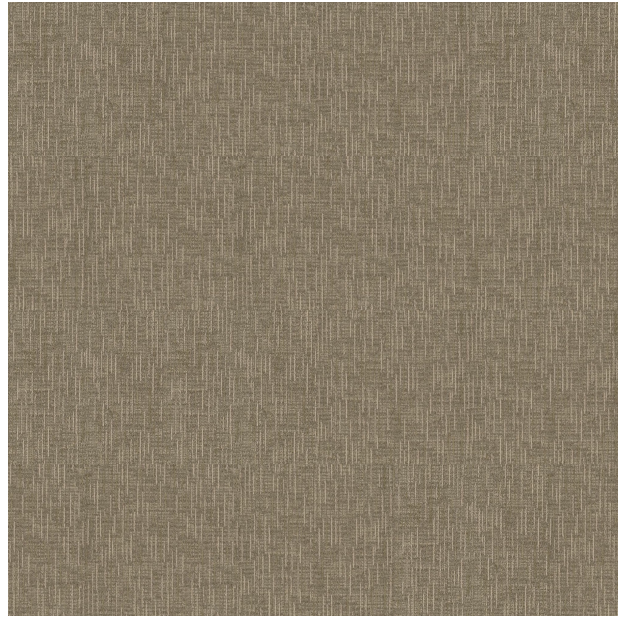
FLOORING

Keys



Cameo II Modular 7949 Modular
1995 Norman

carpet



Pattern Diagram

