



Installation Methods: Brick, Monolithic, Ashlar, Quarter Turn

Product Specifications

Construction	Multi-Level Tip Sheared Loop
Backing	Nexus® Modular
Dye Method	Solution/Yarn Dyed
Nylon Fiber Type	Encore® BCF (with recycled content)
Face Weight	35 oz./sy (1187 grams/m2)
Pile Density	6691 oz./y3 (248.11 kg/m3)
Pattern Repeat	N/A
Gauge	1/10 (3.94 rows/cm)
Stitches Per Inch	9 stitches/in (3.54 stitches/cm)
Standard Size	24" x 24" approx. (60.96cm x 60.96cm)
Standard Adhesive	Commercialon Premium Modular Adhesive
Optional Adhesive	TileTabs
Standard Warranties	Encore BCF (with ColorLoc Plus) Nexus Modular Commercialon Adhesive for Modular Carpet & LVT

Optional Warranties	Tile Tabs
----------------------------	---------------------------

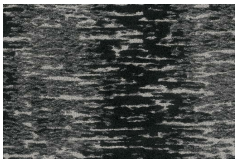
Special Technologies

Colorloc® Plus	Standard
ProSept® Antimicrobial	Optional
ProTex® Soil Release	Standard
Sentir® Odor-Blocker	Optional

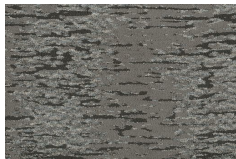
Environmental Specifications & Tests

NSF 140:	Gold Certified
Indoor Air Quality	GLP9716
Total Recycled Content	42.64%
Flooring Radiant Panel	Class 1
Smoke Density	Less than 450 flaming (ASTM E 662)
Static Test	Less than 3 kv (AATCC-134)
ADA Compliance	Compliant For Accessible Routes
Pill Test	Yes
Lightfastness	Yes

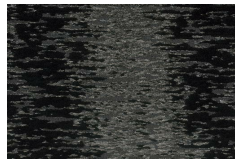
Colorways



2312 Glazed



2313 Iron



2314 Obsidian



2315 Bisque



2316 Clay



2317 Oxide



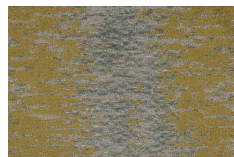
2318 Alumina



2319 Vitreous



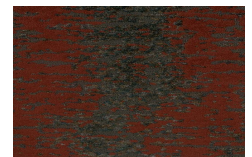
2320 Tarnish



2321 Fresco



2322 Alkaline



2323 Molten



2324 Lucid Ash