



Installation Methods: Brick, Monolithic, Ashlar, Quarter Turn

Product Specifications

Construction	Textured Patterned Loop
Backing	Nexus® Modular
Dye Method	Solution/Yarn Dyed
Nylon Fiber Type	Encore® BCF (with recycled content)
Face Weight	28 oz./sy (949 grams/m2)
Pile Density	7127 oz./y3 (264.27 kg/m3)
Pattern Repeat	N/A
Gauge	1/12 (4.72 rows/cm)
Stitches Per Inch	12.5 stitches/in (4.92 stitches/cm)
Standard Size	24" x 24" approx. (60.96cm x 60.96cm)
Standard Adhesive	Commercialon Premium Modular Adhesive
Optional Adhesive	TileTabs
Standard Warranties	Encore BCF (with ColorLoc Plus) Nexus Modular Commercialon Adhesive for Modular Carpet & LVT

Optional Warranties [Tile Tabs](#)

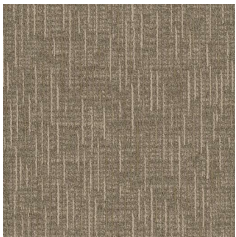
Special Technologies

Colorloc® Plus	Standard
ProSept® Antimicrobial	Optional
ProTex® Soil Release	Standard
Sentir® Odor-Blocker	Optional

Environmental Specifications & Tests

NSF 140:	Gold Certified
Indoor Air Quality	GLP9716
Total Recycled Content	44.29%
Flooring Radiant Panel	Class 1
Smoke Density	Less than 450 flaming (ASTM E 662)
Static Test	Less than 3 kv (AATCC-134)
ADA Compliance	Compliant For Accessible Routes
Pill Test	Yes
Lightfastness	Yes

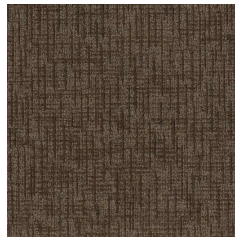
Colorways



1995 Norman



1996 Bourne



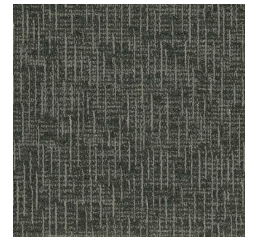
1997 Skywalker



1998 Stella



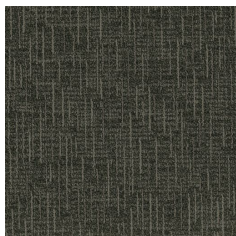
1999 Atticus



2000 Powers



2001 Katniss



2002 Scout



2003 Bueller



2005 Shaft



2006 Vader