



Installation Methods: Brick, Monolithic, Ashlar, Quarter Turn

Product Specifications

Construction	Tip Sheared Patterned Loop
Backing	Nexus® Modular
Dye Method	Solution/Yarn Dyed
Nylon Fiber Type	Encore® BCF (with recycled content)
Face Weight	23 oz./sq yd (780 grams/m ²)
Pile Density	9258 oz./sq yd (343.29 kg/m ³)
Pattern Repeat	N/A
Gauge	1/12 (4.72 rows/cm)
Stitches Per Inch	11 stitches/in (4.33 stitches/cm)
Standard Size	24" x 24" approx. (60.96cm x 60.96cm)
Standard Adhesive	Commercialon Premium Modular Adhesive
Optional Adhesive	TileTabs
Standard Warranties	Encore BCF (with ColorLoc Plus) Nexus Modular Commercialon Adhesive for Modular Carpet & LVT

Optional Warranties	Tile Tabs
----------------------------	---------------------------

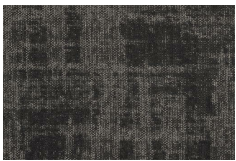
Special Technologies

ColorLoc® Plus	Standard
Colorloc® Plus	Standard
ProSept® Antimicrobial	Optional
ProTex® Soil Release	Standard
Sentir® Odor-Blocker	Optional

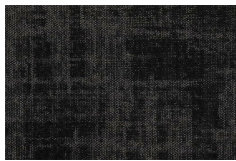
Environmental Specifications & Tests

NSF 140:	Gold Certified
Indoor Air Quality	GLP9716
Total Recycled Content	45.66%
Flooring Radiant Panel	Class 1
Smoke Density	Less than 450 flaming (ASTM E 662)
Static Test	Less than 3 kv (AATCC-134)
ADA Compliance	Compliant For Accessible Routes
Pill Test	Yes
Lightfastness	Yes

Colorways



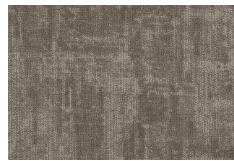
2871 Fleck



2872 Ticking



2873 Calico



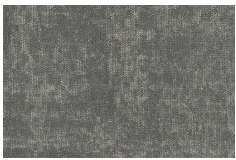
2874 Mills



2875 Eyelet



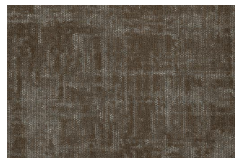
2876 Gauze



2877 Felt



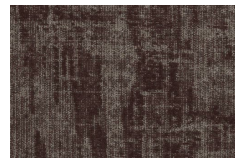
2878 Cloth



2879 Percale



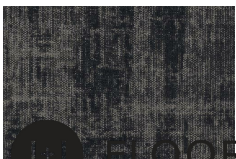
2880 Armure



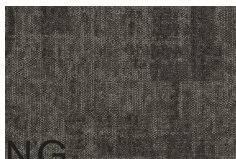
2881 Brocade



2882 Chintz



2883 Corded



2884 Plush

