



**Installation Methods:** Brick, Monolithic, Ashlar, Quarter Turn

**Product Specifications**

<b>Construction</b>	Patterned Loop
<b>Backing</b>	Nexus® Modular
<b>Dye Method</b>	Solution/Yarn Dyed
<b>Nylon Fiber Type</b>	Encore® BCF (with recycled content)
<b>Face Weight</b>	21 oz./sy (712 grams/m2)
<b>Pile Density</b>	7409 oz./y3 (274.73 kg/m3)
<b>Pattern Repeat</b>	N/A
<b>Gauge</b>	1/12 (4.72 rows/cm)
<b>Stitches Per Inch</b>	9.16 stitches/in (3.61 stitches/cm)
<b>Standard Size</b>	24" x 24" approx. (60.96cm x 60.96cm)
<b>Standard Adhesive</b>	Commercialon Premium Modular Adhesive
<b>Optional Adhesive</b>	TileTabs
<b>Standard Warranties</b>	<a href="#">Encore BCF (with ColorLoc Plus)</a> <a href="#">Nexus Modular</a> <a href="#">Commercialon Adhesive for Modular Carpet &amp; LVT</a>

**Optional Warranties** [Tile Tabs](#)

**Special Technologies**

<b>Colorloc® Plus</b>	Standard
<b>ProSept® Antimicrobial</b>	Optional
<b>Sentir® Odor-Blocker</b>	Optional

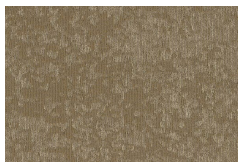
**Environmental Specifications & Tests**

<b>NSF 140:</b>	Gold Certified
<b>Indoor Air Quality</b>	GLP9716
<b>Total Recycled Content</b>	46.25%
<b>Flooring Radiant Panel</b>	Class 1
<b>Smoke Density</b>	Less than 450 flaming (ASTM E 662)
<b>Static Test</b>	Less than 3 kv (AATCC-134)
<b>ADA Compliance</b>	Compliant For Accessible Routes
<b>Pill Test</b>	Yes
<b>Lightfastness</b>	Yes

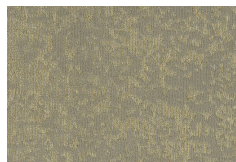
**Colorways**



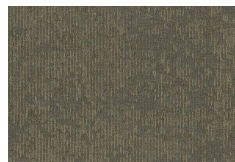
2007 Salt Creek



2008 Golden Canyon



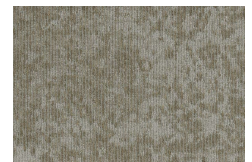
2009 Jubilee Pass



2010 Furnace Creek



2011 Panamint



2012 Scottie



2013 Stove Pipe



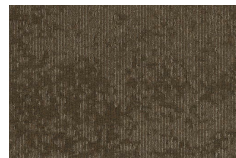
2014 Badwater



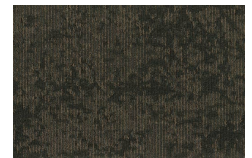
2015 Dante's View



2016 Darwin Wells



2017 Mesquite Flat



2018 Black Mountain



2019 Zabriskie