



## Product Specifications

<b>Construction</b>	Textile Composite
<b>Backing</b>	Polyester Felt Cushion
<b>Dye Method</b>	Solution Dyed
<b>Wear Layer</b>	Polyester - Applied Pattern
<b>Pattern Repeat</b>	N/A
<b>Total Weight</b>	4.5 oz - 5.2 oz/ square foot
<b>Total Thickness</b>	.205 inches
<b>Dimensions:</b>	24" x 24" modules
<b>Standard Adhesive</b>	Kinetex Adhesive
<b>Optional Adhesive</b>	Kinetex PreFix
<b>Packaging</b>	18 modules per box (72 sq.ft)
<b>Standard Warranties</b>	<a href="#">Kinetex</a> <a href="#">Kinetex Adhesive</a>
<b>Optional Warranties</b>	<a href="#">PreFix</a>

## Special Technologies

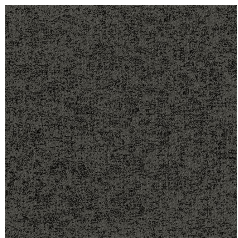
<b>Kinetex ProTex®</b>	Standard
------------------------	----------

## Environmental Specifications & Tests

<b>Recyclability:</b>	100% Closed-loop Recyclable
<b>NSF 140:</b>	Platinum Certified
<b>Indoor Air Quality</b>	GLP2690
<b>Total Recycled Content:</b>	45%
<b>Flooring Radiant Panel</b>	Class 1
<b>Smoke Density</b>	Less than 450 flaming (ASTM E 662)
<b>Static Test</b>	Less than 3 kv (AATCC-134)
<b>ADA Compliance</b>	Compliant For Accessible Routes
<b>Pill Test</b>	Yes
<b>Lightfastness</b>	Yes

**Installation Methods:** Brick, Ashlar, Quarter Turn

## Colorways



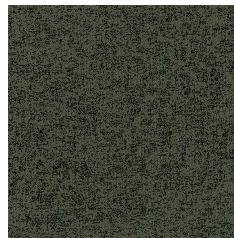
2684 Dappled



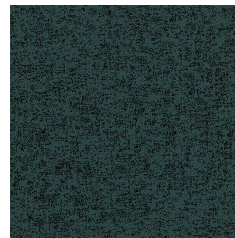
2685 Dotted



2688 Mottled



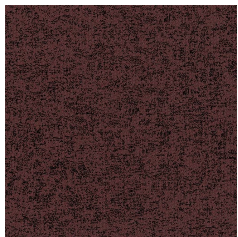
2689 Flecked



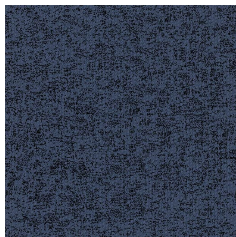
2690 Peppered



2691 Speckled



2692 Spotted



2694 Studded



2695 Variegated