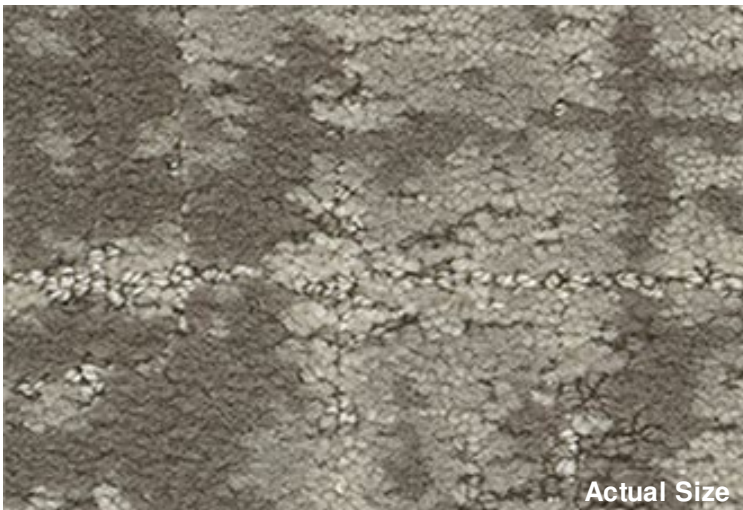




Pattern Reference



Actual Size



Aperture II Modular (7770)

Product Quick Specs

Style Name/Number	Aperture II Modular 7770
Color Name/Number	Warm Toned 2255
Construction	Patterned Cut and Loop
Selected Backing	Nexus® Modular
Dye Method	Beck Dyed
Fiber Type	Type 6,6 Nylon
Face Weight	37 oz./sy (1255 grams/m2)
Pile Density	8061 oz./y3 (298.91 kg/m3)
Pattern Repeat	N/A
Gauge	1/10 (3.94 rows/cm)
Stitches	10 stitches/in (3.94 stitches/cm)
Standard Size	24" x 24" approx. 60.96cm x 60.96cm
Standard Adhesive	Commercialon Premium Modular Adhesive
Smoke Density	Less then 450 flaming
Static Test	Less then 3 kv
Standard Warranties	Nexus Modular Commercialon Adhesive for Modular Carpet & LVT
Optional Warranties	Tile Tabs



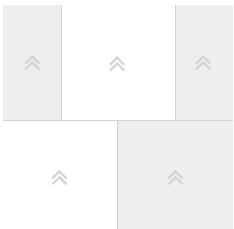
Products Installed



Aperture II Modular 7770
Modular
2255 Warm Toned

carpet

Installation Method



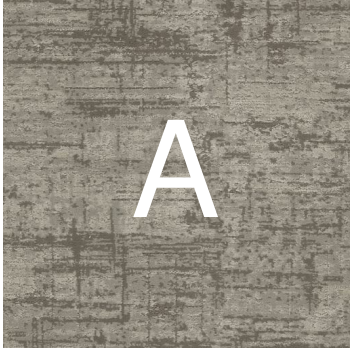
Brick (24x24)

This three dimensional rendering is for visualization purposes only and may not be an exact representations of the selected products. Pile heights may vary from product to product and adhesive requirements may vary depending on product selection. The review of actual product samples are recommended before final selection. Please contact your J+J Flooring Group sales representative with any questions. This unique carpet design is protected under the U.S. Copyright Act of 1976. Any unauthorized copying or duplication of this design constitutes copyright infringement in violation of federal law.



FLOORING

Keys



Aperture II Modular 7770
Modular
2255 Warm Toned

carpet



Pattern Diagram

