



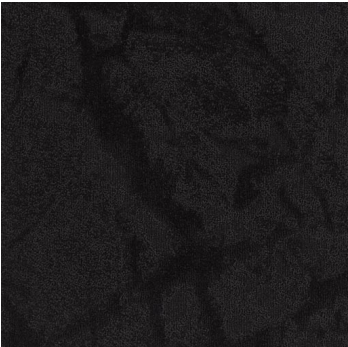
## Fire & Ice (7588)

### Product Quick Specs

<b>Style Name/Number</b>	Fire & Ice 7588
<b>Color Name/Number</b>	Basalt 2885
<b>Construction</b>	Tip Sheared Patterned Loop
<b>Selected Backing</b>	Nexus® Modular
<b>Dye Method</b>	Solution Dyed
<b>Fiber Type</b>	Encore® SD Ultima® (with recycled content)
<b>Face Weight</b>	28 oz./sy (949 grams/m2)
<b>Pile Density</b>	7622 oz./y3 (282.63 kg/m3)
<b>Pattern Repeat</b>	N/A
<b>Gauge</b>	1/12 (4.72 rows/cm)
<b>Stitches</b>	10 stitches/in (3.94 stitches/cm)
<b>Standard Size</b>	24" x 24" approx. 60.96cm x 60.96cm
<b>Standard Adhesive</b>	Commercialon Premium Modular Adhesive
<b>Optional Adhesive</b>	TileTabs
<b>Smoke Density</b>	Less than 450 flaming
<b>Static Test</b>	Less than 3 kv
<b>Standard Warranties</b>	<a href="#">Encore SD Ultima Fiber</a> <a href="#">Nexus Modular</a> <a href="#">Commercialon Adhesive for Modular Carpet &amp; LVT</a>
<b>Optional Warranties</b>	<a href="#">Tile Tabs</a>



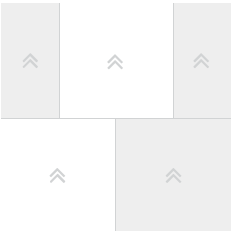
Products Installed



Fire & Ice 7588 Modular  
2885 Basalt

carpet

Installation Method

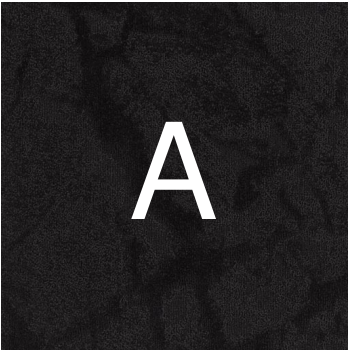


Brick (24x24)

This three dimensional rendering is for visualization purposes only and may not be an exact representations of the selected products. Pile heights may vary from product to product and adhesive requirements may vary depending on product selection. The review of actual product samples are recommended before final selection. Please contact your J+J Flooring Group sales representative with any questions. This unique carpet design is protected under the U.S. Copyright Act of 1976. Any unauthorized copying or duplication of this design constitutes copyright infringement in violation of federal law.

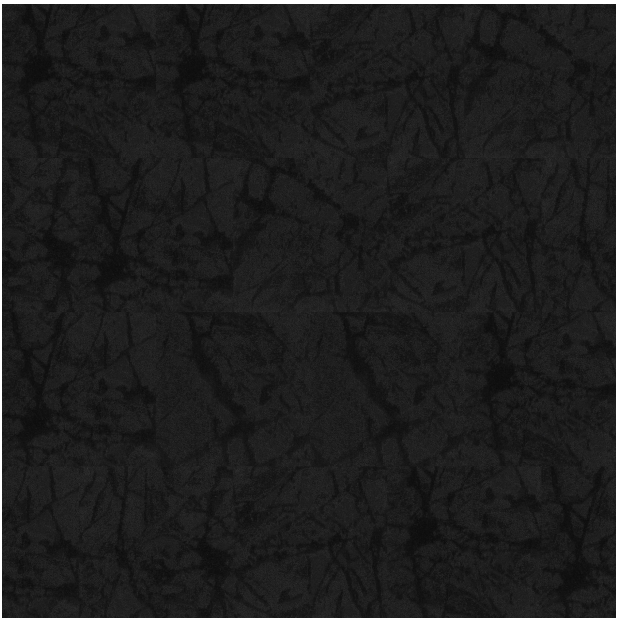


Keys



Fire & Ice 7588 Modular  
2885 Basalt

carpet



Pattern Diagram

