

Flash (1818)

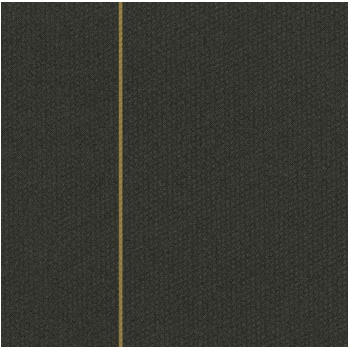
Product Quick Specs

Style Name/Number	Flash 1818
Color Name/Number	Mostaza 1720
Construction	Textile Composite
Selected Backing	Polyester Felt Cushion
Dye Method	Solution Dyed
Fiber Type	100% Solution Dyed Polyester
Face Weight	12 oz./sy (407 grams/m2)
Pattern Repeat	N/A
Dimensions	24" x 24" modules
Standard Adhesive	Kinetex Adhesive
Optional Adhesive	Kinetex PreFix
Smoke Density	Less then 450 flaming
Static Test	Less then 3 kv
Standard Warranties	<a href="#">Kinetex</a> <a href="#">Kinetex Adhesive</a>
Optional Warranties	<a href="#">PreFix</a>





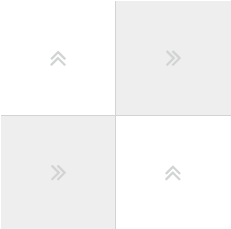
**Products Installed**



Flash 1818 Modular  
1720 Mostaza



**Installation Method**

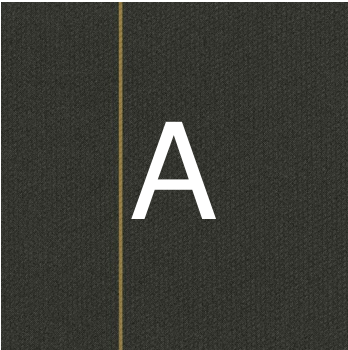


Quarter Turn (24x24)

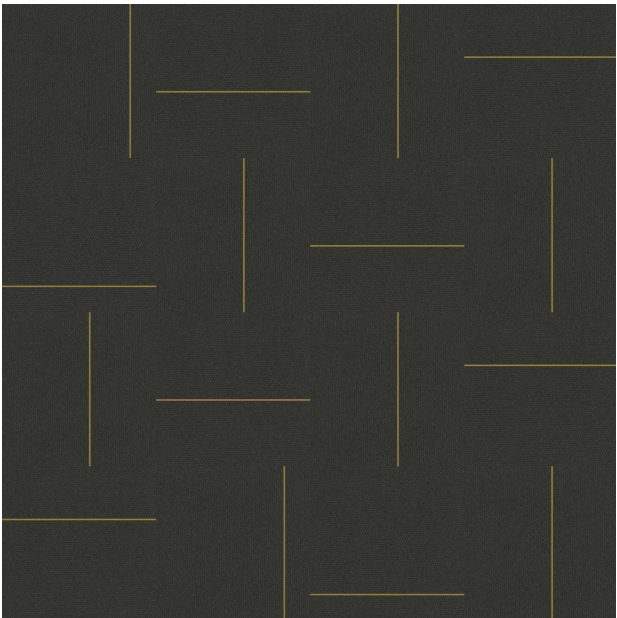
This three dimensional rendering is for visualization purposes only and may not be an exact representations of the selected products. Pile heights may vary from product to product and adhesive requirements may vary depending on product selection. The review of actual product samples are recommended before final selection. Please contact your J+J Flooring Group sales representative with any questions. This unique carpet design is protected under the U.S. Copyright Act of 1976. Any unauthorized copying or duplication of this design constitutes copyright infringement in violation of federal law.



Keys



Flash 1818 Modular  
1720 Mostaza



Pattern Diagram

A ⌞	A ⌞	A ⌞	A ⌞
A ⌞	A ⌞	A ⌞	A ⌞
A ⌞	A ⌞	A ⌞	A ⌞
A ⌞	A ⌞	A ⌞	A ⌞