



Installation Methods: Parquet, Herringbone, Basketweave, Ashlar

Product Specifications

Construction	Textured Loop
Backing	Nexus® Modular
Dye Method	Solution Dyed
Nylon Fiber Type	Encore® SD Ultima® (with recycled content)
Face Weight	25 oz./sq (848 grams/m ²)
Pile Density	7451 oz./y ³ (276.29 kg/m ³)
Pattern Repeat	N/A
Gauge	1/10 (3.94 rows/cm)
Stitches Per Inch	9 stitches/in (3.54 stitches/cm)
Standard Size	12" x 48" approx. (30.48cm x 30.48cm)
Standard Adhesive	Commercialon Premium Modular Adhesive
Optional Adhesive	TileTabs
Standard Warranties	Encore SD Ultima Fiber Nexus Modular Commercialon Adhesive for Modular Carpet & LVT

Optional Warranties	Tile Tabs
----------------------------	---------------------------

Special Technologies

ProSept® Antimicrobial	Optional
ProTex® Soil Release	Standard
Sentir® Odor-Blocker	Optional

Environmental Specifications & Tests

NSF 140:	Gold Certified
Indoor Air Quality	GLP9716
Total Recycled Content	45.85%
Flooring Radiant Panel	Class 1
Smoke Density	Less than 450 flaming (ASTM E 662)
Static Test	Less than 3 kv (AATCC-134)
ADA Compliance	Compliant For Accessible Routes
Pill Test	Yes
Lightfastness	Yes

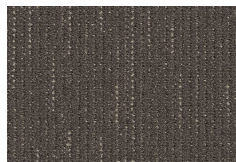
Colorways



2703 Texture



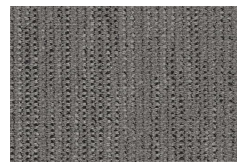
2704 Variegated



2706 Strand



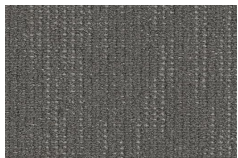
2707 Fiber



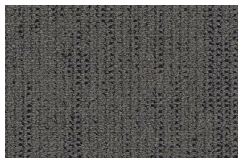
2708 Warp



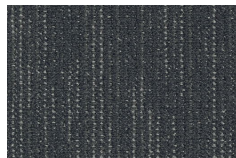
2709 Character



2710 Tweed



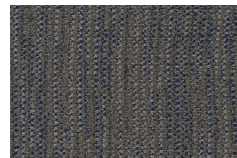
2711 Knit



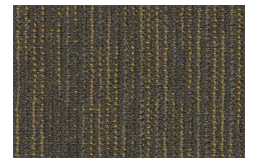
2712 Knot



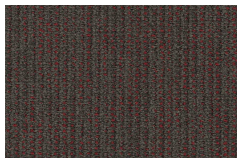
2713 Loop



2714 Nubby



2715 Weave



2716 Structure