

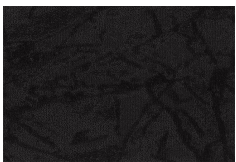


**Installation Methods:** Brick, Monolithic, Ashlar, Quarter Turn

**Product Specifications**

<b>Construction</b>	Tip Sheared Patterned Loop
<b>Backing</b>	Nexus® Modular
<b>Dye Method</b>	Solution Dyed
<b>Nylon Fiber Type</b>	Encore® SD Ultima® (with recycled content)
<b>Face Weight</b>	28 oz./sq (949 grams/m <sup>2</sup> )
<b>Pile Density</b>	7622 oz./y <sup>3</sup> (282.63 kg/m <sup>3</sup> )
<b>Pattern Repeat</b>	N/A
<b>Gauge</b>	1/12 (4.72 rows/cm)
<b>Stitches Per Inch</b>	10 stitches/in (3.94 stitches/cm)
<b>Standard Size</b>	24" x 24" approx. (60.96cm x 60.96cm)
<b>Standard Adhesive</b>	Commercialon Premium Modular Adhesive
<b>Optional Adhesive</b>	TileTabs
<b>Standard Warranties</b>	<a href="#">Encore SD Ultima Fiber</a> <a href="#">Nexus Modular</a> <a href="#">Commercialon Adhesive for Modular Carpet &amp; LVT</a>
<b>Optional Warranties</b>	<a href="#">Tile Tabs</a>
<b>Special Technologies</b>	
<b>ProSept® Antimicrobial</b>	Optional
<b>ProTex® Soil Release</b>	Standard
<b>Sentir® Odor-Blocker</b>	Optional
<b>Environmental Specifications &amp; Tests</b>	
<b>NSF 140:</b>	Gold Certified
<b>Indoor Air Quality</b>	GLP9716
<b>Total Recycled Content</b>	45.12%
<b>Flooring Radiant Panel</b>	Class 1
<b>Smoke Density</b>	Less than 450 flaming (ASTM E 662)
<b>Static Test</b>	Less than 3 kv (AATCC-134)
<b>ADA Compliance</b>	Compliant For Accessible Routes
<b>Pill Test</b>	Yes
<b>Lightfastness</b>	Yes

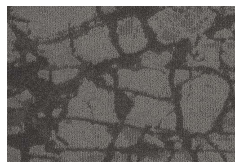
**Colorways**



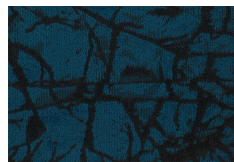
2885 Basalt



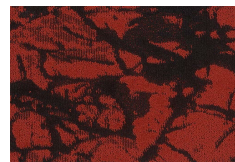
2886 Chill



2887 Sleet



2888 Lake



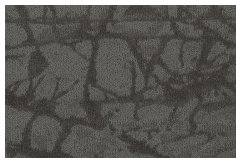
2889 Molten



2890 Freeze



2891 Smoke



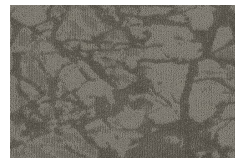
2892 Vapor



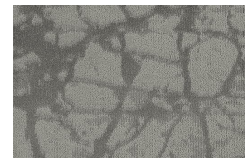
2893 Caldera



2894 Rift



2895 Ash



2896 Crystalline



2897 Cinder