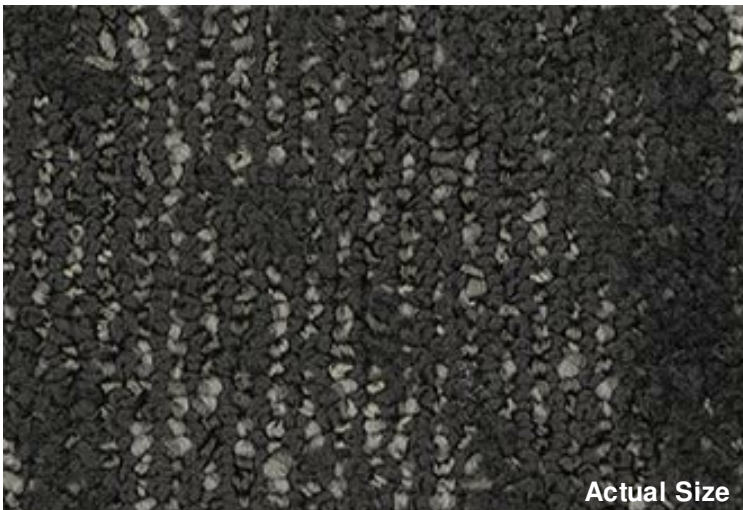




Pattern Reference



Actual Size



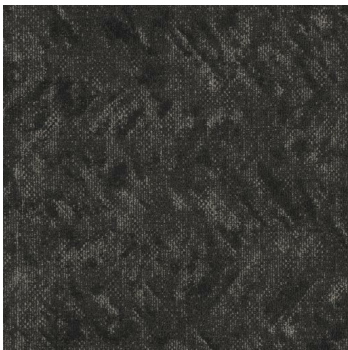
## Twill Weave (7586)

### Product Quick Specs

<b>Style Name/Number</b>	Twill Weave 7586
<b>Color Name/Number</b>	Fleck 2871
<b>Construction</b>	Tip Sheared Patterned Loop
<b>Selected Backing</b>	Nexus® Modular
<b>Dye Method</b>	Solution/Yarn Dyed
<b>Fiber Type</b>	Encore® BCF (with recycled content)
<b>Face Weight</b>	23 oz./sy (780 grams/m2)
<b>Pile Density</b>	8027 oz./y3 (297.65 kg/m3)
<b>Pattern Repeat</b>	N/A
<b>Gauge</b>	1/12 (4.72 rows/cm)
<b>Stitches</b>	11 stitches/in (4.33 stitches/cm)
<b>Standard Size</b>	24" x 24" approx. 60.96cm x 60.96cm
<b>Standard Adhesive</b>	Commercialon Premium Modular Adhesive
<b>Optional Adhesive</b>	TileTabs
<b>Smoke Density</b>	Less then 450 flaming
<b>Static Test</b>	Less then 3 kv
<b>Standard Warranties</b>	<a href="#">Encore BCF (with ColorLoc Plus)</a> <a href="#">Nexus Modular</a> <a href="#">Commercialon Adhesive for Modular Carpet &amp; LVT</a>
<b>Optional Warranties</b>	<a href="#">Tile Tabs</a>



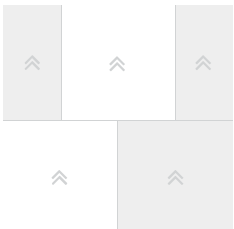
## Products Installed



Twill Weave 7586 Modular  
2871 Fleck

carpet

## Installation Method



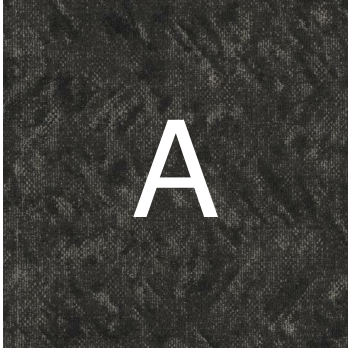
Brick (24x24)

This three dimensional rendering is for visualization purposes only and may not be an exact representations of the selected products. Pile heights may vary from product to product and adhesive requirements may vary depending on product selection. The review of actual product samples are recommended before final selection. Please contact your J+J Flooring Group sales representative with any questions. This unique carpet design is protected under the U.S. Copyright Act of 1976. Any unauthorized copying or duplication of this design constitutes copyright infringement in violation of federal law.



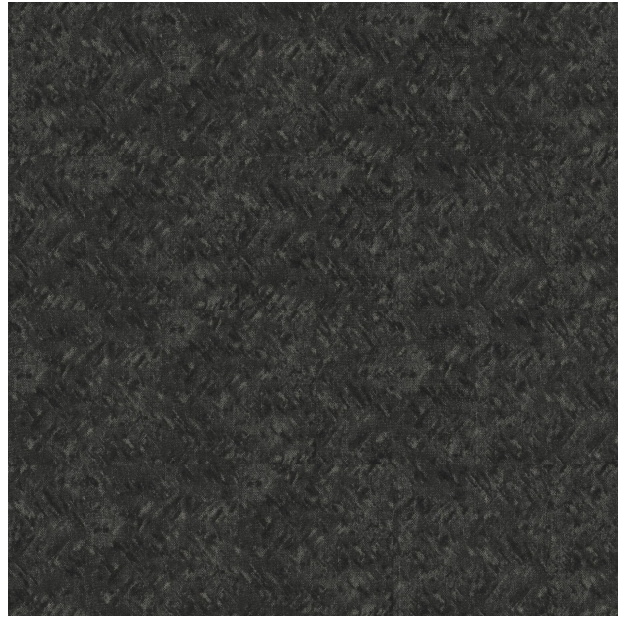
# FLOORING

## Keys



Twill Weave 7586 Modular  
2871 Fleck

carpet



## Pattern Diagram

